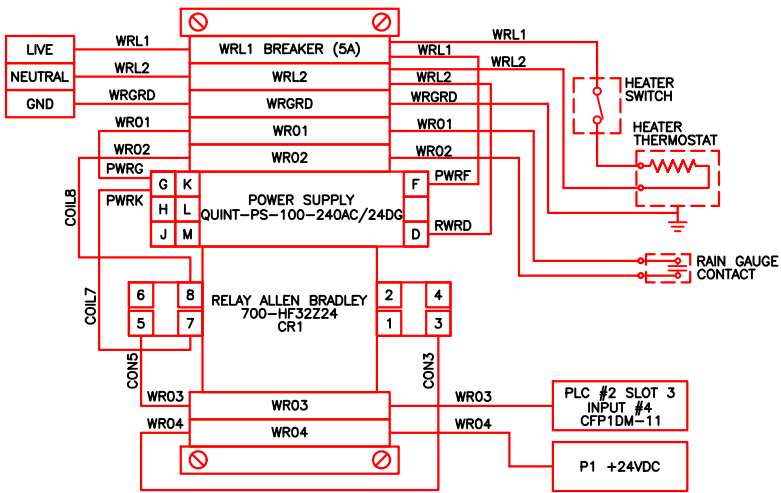


RAIN GAUGE POWER DIAGRAM



RAIN GAUGE RACK

BILL OF MATERIALS				
ITEM	DESCRIPTION	PART NUMBER	QUANTITY	MANUFACTURER
1	24V POWER SUPPLY	QUINT-PS-100-240AC/24DG	1	PHOENIX CONTACT
2	DPDT RELAY	700-HF32-24	1	ALLEN BRADLEY
3	HEATER SWITCH	XXX	1	XXX
4	HEATER THERMOSTAT	XXX	1	XXX
5	GROUP MARKER	292450000	1	WEIDMULLER
6	END BRACKET	383560000	2	WEIDMULLER
7	KNIFE GATE TERMINAL DKT 4/55	687460000	1	WEIDMULLER
8	OUTPUT RELAY BASE	700-HN121	1	ALLEN BRADLEY
9	FEED THROUGH TERMINAL	380560000	6	WEIDMULLER

**NOTES:**  
1. ENCLOSURE IS TO BE NEMA 4X STAINLESS STEEL. SIZE TO FIT COMPONENTS.

THESE DRAWINGS ARE TEMPLATE DRAWINGS

- REMOVE THIS NOTE AS PART OF THE DESIGN PROCESS.
- MODIFY THIS DRAWING AS DIRECTED IN THE SCADA STANDARDS.
- ADD ADDITIONAL DETAILS AS REQUIRED TO MEET THE PROJECT SPECIAL REQUIREMENTS.
- WHEN THE CONSULTANT DEVIATES FROM THIS TEMPLATE THEY ARE REQUIRED TO NOTIFY HALTON REGION THROUGH THE USE OF THE STANDARDS DEVIATION MEMO. FUSED TERMINAL BLOCKS AND CIRCUIT BREAKERS TO BE SIZED APPROPRIATELY.
- SHOW ADDITIONAL RIO RACKS (UP TO A MAXIMUM OF 2) ONLY IF NECESSARY BASED ON DESIGN REQUIREMENTS.
- THE CONSULTANT IS TO SPECIFY SIGNAL ISOLATORS WHERE REQUIRED. FOLLOW MANUFACTURERS' SPECIFICATIONS FOR GROUNDING OF SHIELDS.

REVISIONS				
NO	Date	By	Ch'kd	Date
Design	-	-	Ch'kd	-
Drawn	-	-	Ch'kd	-
Scale	N.T.S.			References

Field Notes

Stamp

Regional

ACCEPTED FOR CONSTRUCTION  
OF REGIONAL INFRASTRUCTURE

Reviewed For Compliance With  
Regional Standards Only.

Director, Wastewater Services

Manager, Wastewater Design & Construction



TITLE HALTON REGION SCADA STANDARDS  
TYPE III & IV WASTEWATER P.S.

RAIN GAUGE DETAILS

Consultant File NO Regional Drawing NO

CONTRACT NO Drawing NO E200  
SHEET X OF X